



MICRO SWITCH

FREEPORT, ILLINOIS, U.S.A.
A DIVISION OF HONEYWELL

FED. MFG. CODE 91889

SWITCH-BASIC

CATALOG LISTING
BZ-2R72-A2

AGQ7000 AND JG 05920

BZ-2R72-A2
PAGE 1 OF 1

M
DRAWING NUMBER

8
ISSUE

REPLACES

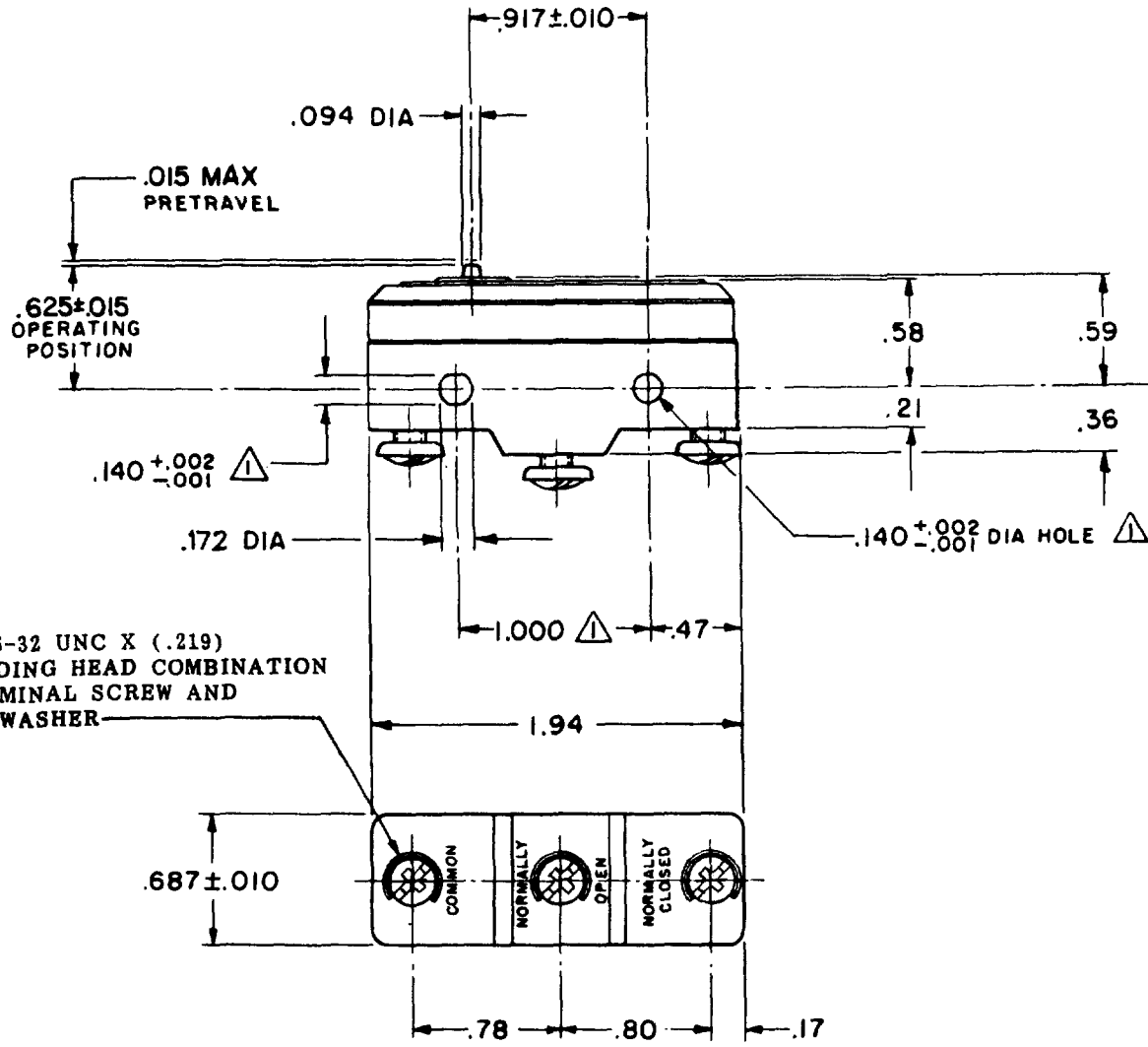
RELEASE NO.

CHECK

REVISIONS

A	CO	15200	07OCT05
W	L K	18 MAR 64	
B	CO	031576	
23	JAN	73	
C	CO	009885	
27	MAY	68	
D	CO	73287-1	
22	NOV	93	
E	CO	77589	
29	MAR	94	
F	CO	093346	
18	AUG	98	
G	CO	0015540	
07	OCT	05	

FO-90376
DRAWN
W L K
16 MAR 64
CHECK
DAW



NOTES
 △ - MOUNTING HOLES WILL ACCEPT PINS OR SCREWS OF .139 MAX DIA ON 1.000 ±.002 CENTERS
 2 - CONTACT MATERIAL - GOLD ALLOY

THIS DRAWING COVERS A PROPRIETARY ITEM AND IS THE PROPERTY OF MICRO SWITCH, A DIVISION OF MINNEAPOLIS-HONEYWELL REGULATOR CO. THIS DRAWING IS NOT TO BE COPIED OR USED WITHOUT THE APPROVAL OF MICRO SWITCH.

CHARACTERISTICS	ELECTRICAL DATA	SCALE FULL
OPERATING FORCE ----- 9-13 OZ	CONTACT ARRANGEMENT S P D T	DO NOT SCALE PRINT
RELEASE FORCE ----- 4 OZ MIN	-L22- 1A - 125 VAC	UNLESS OTHERWISE NOTED DIMENSIONS ARE IN INCHES
DIFFERENTIAL TRAVEL --- .0004 - .0020	-L288- -L315- -L307-	TOLERANCES ARE: ONE PLACE (.0) ±.030 TWO PLACE (.00) ±.015 THREE PLACE (.000) ±.005 ANGLES ±
OVERTRAVEL ----- .005 MIN	CE 1A 250V ~ T85 25E3	WEIGHT .060 LB